

COUNTY OF SAN MATEO
Parks Department



DATE: July 27, 2015

COMMISSION MEETING DATE: August 6, 2015

TO: Parks and Recreation Commission
FROM: Cecily Harris, Development Consultant
SUBJECT: San Mateo County Measure A Grant Program Update

RECOMMENDATION:

Accept informational report.

BACKGROUND:

In November 2012, San Mateo County voters approved Measure A, a 10-year half-cent general sales tax to maintain the quality of life for all County residents by providing essential services and maintaining and/or replacing critical facilities.

Using the Shared Vision 2025 guiding principles, the San Mateo County Manager's Office established a FY 2015-2017 Measure A application process to enable County Departments and community-based organizations to submit letters of intent for programs and projects that meet unmet needs in the community.

In March 2015, the Measure A Subcommittee reviewed the letters of intent and made recommendations to the Board of Supervisors. San Mateo County Parks received \$5.0 million for FY 2015/2016 and \$5.0 million for FY 2016/2017 from Measure A. Parks was asked to include a prioritized list of six grants to five grantees for \$2,522,000 from the two-year Parks Measure A budget.

DISCUSSION:

During summer and fall 2015, the Board of Supervisors is awarding six Measure A grants to the five public agencies and nonprofit organizations for park-related infrastructure and services. San Mateo County Parks will administer the grant funds, track program/project progress and report these performance measures.

1. Midpeninsula Regional Open Space District (MROSD)
Project: Ravenswood Bay Trail Connection Project

Over two fiscal years, MROSD will design, plan, permit, and construct the 0.6-mile-long Ravenswood Bay Trail Connection to link the Ravenswood Open Space Preserve and University Avenue along the boundary between East Palo Alto and Menlo Park. The Connection eliminates a major gap in the Bay Trail and increases opportunities for healthy, active lifestyles and new public access to the bayshore. The \$1,000,000 Measure A grant will partially fund the design/planning and construction phases of the project. The \$1.4 million balance of funding needed for planning and constructing the project is being provided by Santa Clara County and MROSD. Attached is the PowerPoint that is being presented at the SF Bay Trail Board meeting on Friday, July 24.

2. Coastside Land Trust (CLT)

Project: Wavecrest Trail, Phase 2

CLT will develop plans, permits, and CEQA/CDP for the second phase of the Wavecrest Trail, a new segment of the California Coastal Trail. This two-mile-long multi-use trail will connect the City of Half Moon Bay with its southern neighborhoods, from the Wavecrest Property south to Redondo Beach Road. The \$260,000 Measure A grant will cover design, planning, and permitting costs. In a later phase, CLT will secure funds to build the trail.

3. City of Pacifica (City)

Project: Pedro Point Headlands

The City will acquire the five-acre undeveloped Colt Property as an addition to the Pedro Point Headlands. The Colt Property is an essential addition to Pedro Point Headlands as the California Coastal Trail can then be developed between the Devil's Slide Trail and the City of Pacifica's trails system. The \$80,000 Measure A grant will be combined with grants and other funding sources for the acquisition.

4. Pacifica Land Trust (PLT)

Project: Pedro Point Headlands Trail Building and Habitat Restoration

Over two fiscal years, PLT will use volunteers for all aspects of habitat restoration including plant salvage, propagation, installation and maintenance. Measure A funds will match a \$1,139,274 CA State Park Off-Highway Vehicle Division grant. PLT will use contractors for trail building including layout, clearing and grubbing, excavation, compaction, grading, erosion control, revegetation and maintenance. Measure A funds will support CA Coastal Conservancy funds awarded for trail planning and design. The \$350,000 Measure A grant will also support administration of the project.

5. Student Conservation Association (SCA)

A: GIS Program

For FY 2015/2016, three SCA GIS Program elements will be implemented using Measure A grant funds, San Mateo County Park Foundation donations, SCA

philanthropy and in-kind donations, and Job Train donations. San Mateo County Parks will benefit through a year-long Senior GIS Intern, Summer GIS Intern, and two four-week Summer GIS Youth Crews. The Interns and Crews will collect trails, trails conditions, trails structures and other trails-related data at various County Parks. They may also monitor invasive species using GIS technology and map user-created trails. The projects are vital in the creation of a San Mateo County Parks Geodatabase.

A Measure A grant for \$130,000 will support this work in FY 2015/2016 and another contract will be developed in FY 2016/2017 for \$130,000.

B: Conservation Crews

For FY 2015/2016, four SCA Conservation Crew Programs will be implemented using Measure A grant funds, San Mateo County Park Foundation donations, SCA philanthropy and in-kind donations, Golden Gate National Recreation Area (GGNRA) and Job Train donations.

- 1) School-Year Youth Programs for high school students which will include three Community Crews of 36 youth from East Palo Alto, East Menlo Park, Redwood City and/or Daly City. The youth will participate in weekend and evening service learning and outdoor recreation activities throughout the San Mateo County Parks system.
- 2) Three five-week-long Summer Youth Crews in San Mateo County, GGNRA and Midpeninsula Regional Open Space District (MROSD) parks or open space preserves. These crews of nine youth and two adult leaders will work on natural resource protection and park facility maintenance projects.
- 3) One fourteen-week-long Winter Adult Crew of five adults and one project leader will work on natural resource protection and park facility maintenance projects.
- 4) One Spring Public Service Event to engage 85 or more San Mateo County residents in a day-long volunteer service project in a San Mateo County Park.

A Measure A grant for \$341,000 will be used in FY 2015/2016 and another contract will be developed in FY 2016/2017 for \$341,000.



Completing the Ravenswood Bay Trail Connection

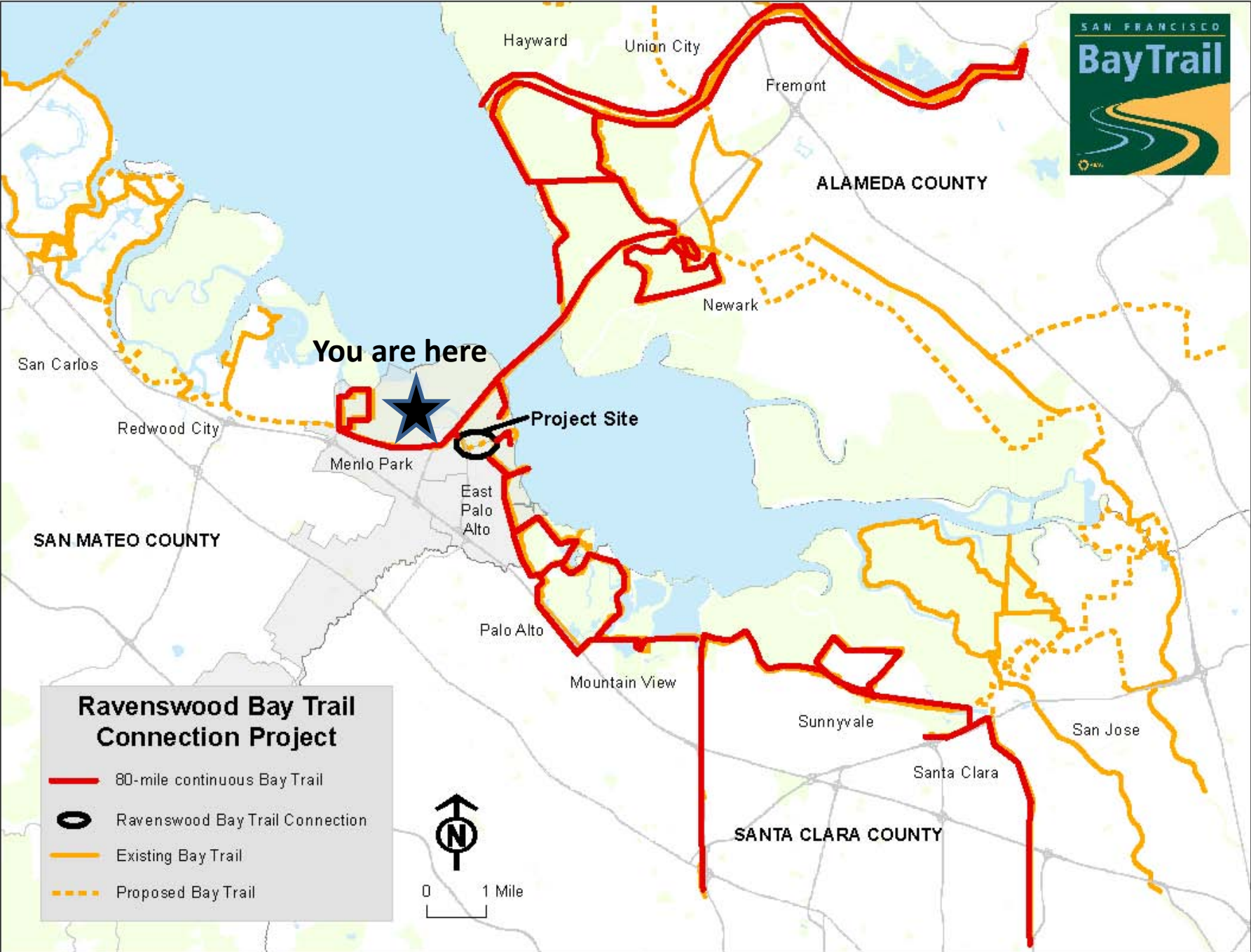
A Model Bay Trail Partnership

July 24, 2015
Bay Trail Board Meeting

City of East Palo Alto
City of Menlo Park
Midpeninsula Regional Open Space District

And Many Others, including...

San Mateo County Parks Department
Santa Clara County Board of Supervisors
San Francisco Public Utilities Commission
Silicon Valley Bicycle Coalition
Facebook
Samtrans

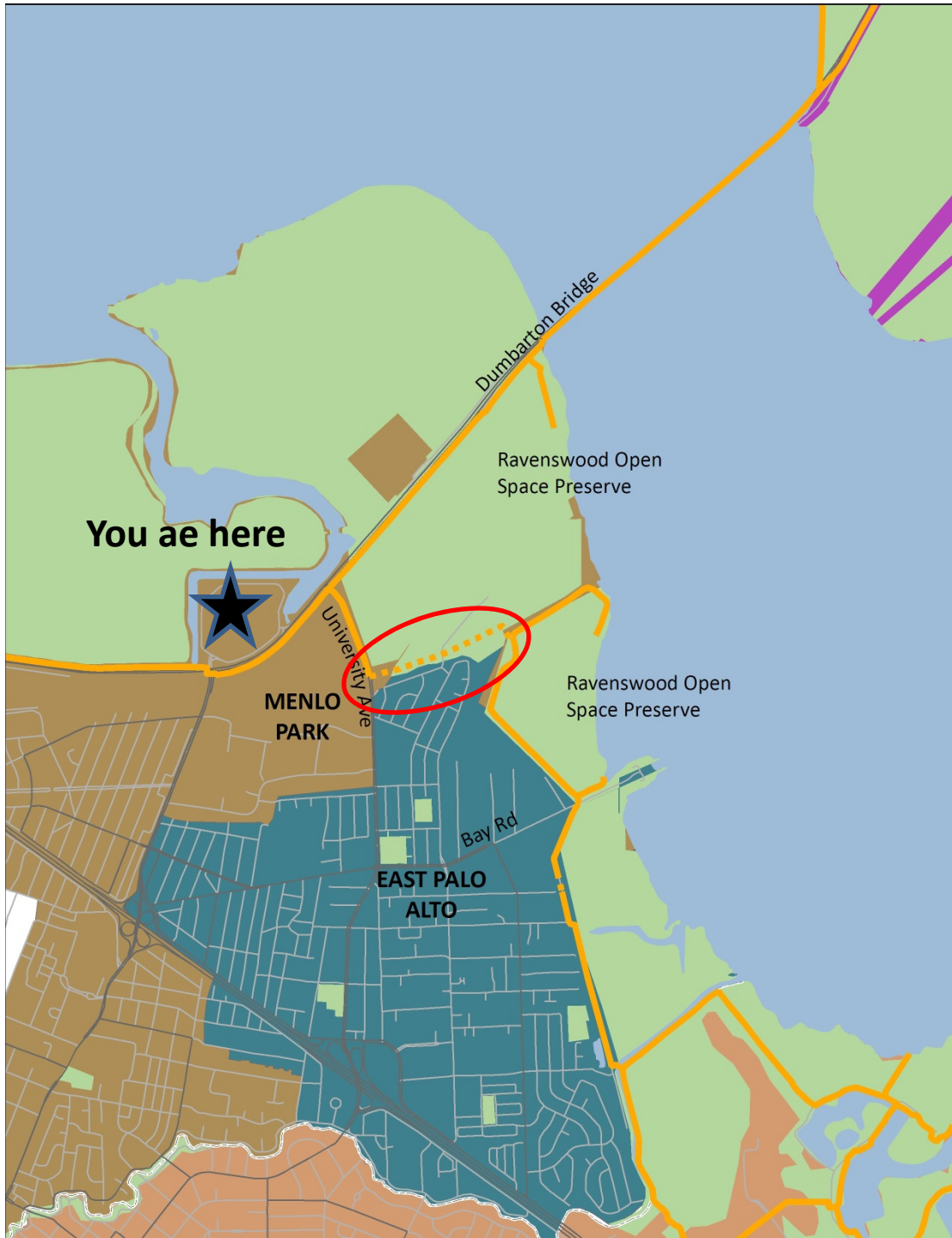


Ravenswood Bay Trail Connection Project

- 80-mile continuous Bay Trail
- Ravenswood Bay Trail Connection
- Existing Bay Trail
- Proposed Bay Trail



0 1 Mile



Ravenswood Bay Trail Connection

- ½-mile gap in the Bay Trail
- located at the boundary of two cities: East Palo Alto and Menlo Park
- situated along an active transportation corridor serving major employers
- final gap in 80 miles of continuous trail linking three counties and a toll bridge
- lack of trail facility requires bicyclists and pedestrians to detour 2 miles on city streets
- one of the most complex Bay Trail gaps in the region:
 - existing wetlands
 - railroad line, activated in future
 - SF Public Utilities Commission land
 - adjacent residential neighborhood
 - nearby Hetch-Hetchy water pipes
 - South Bay Salt Pond restoration
 - former gun club, required clean-up





Final Report
Bay Trail Feasibility Study

prepared for the
City of Menlo Park

January 6, 2005



funding assistance provided by
San Francisco Bay Trail,
a project of the Association of Bay Area Governments and
the Coastal Conservancy

project assistance provided by
Callander Associates Landscape Architecture, Inc.
landscape architecture
land planning
trail planning

First Step: Alignment Study

- \$46,000 Bay Trail/Coastal Conservancy planning grant awarded to the City of Menlo Park
- identified alignment alternatives, conducted topographical surveys and soil tests, and created construction cost estimates
- public workshops were held in partnership with the City of East Palo Alto
- a preferred alignment was identified and the final plan released in 2005

BAY TRAIL CONCEPT PLAN AT RAVENSWOOD

PROJECT REFERENCE REPORT



prepared for:



**Midpeninsula Regional
Open Space District**
330 Distel Circle
Los Altos, CA 94022
(650) 691-1200
(650) 691-0485 F

with funding assistance provided by:



prepared by:



**Callander Associates
Landscape Architecture, Inc.**
311 Seventh Ave.
San Mateo, CA 94401
(650) 375-1313
(650) 344-3290 F

in association with:

David J. Powers and Associates
Biotic Resources Group

Moving the Alignment Study Forward

- \$40,000 Bay Trail/Coastal Conservancy planning grant awarded to the Midpeninsula Regional Open Space District (MROSD) in 2010
- completed conceptual design, CEQA initial study and environmental review
- Working group included Menlo Park, East Palo Alto and SFPUC
- refined the original preferred alignment: combination of bike lanes, paved paths and raised boardwalk trail
- MROSD agreement with SF PUC on public access easement in exchange for land needed to underground Hetch Hetchy water pipes
- Cost estimate: \$2.1 million

BAY TRAIL CONCEPT PLAN AT RAVENSWOOD

Trail Planning and CEQA Consulting





May 18, 2015

CONCEPTUAL TRAIL ALIGNMENT



LEGEND

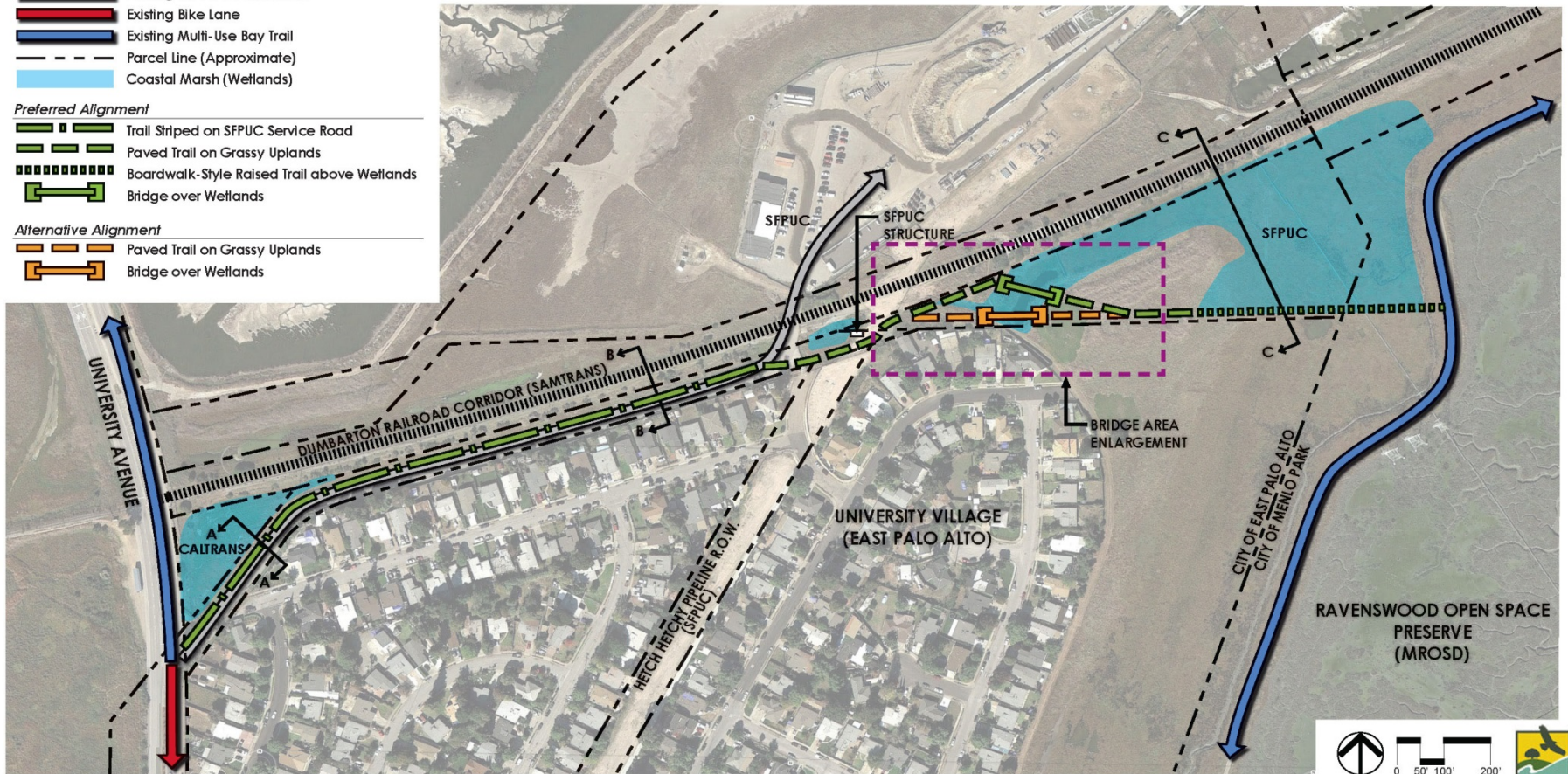
-  Existing SFPUC Service Road
-  Existing Bike Lane
-  Existing Multi-Use Bay Trail
-  Parcel Line (Approximate)
-  Coastal Marsh (Wetlands)

Preferred Alignment

-  Trail Striped on SFPUC Service Road
-  Paved Trail on Grassy Uplands
-  Boardwalk-Style Raised Trail above Wetlands
-  Bridge over Wetlands

Alternative Alignment

-  Paved Trail on Grassy Uplands
-  Bridge over Wetlands



MEANWHILE . . .

- 2012: \$400,000 awarded from Santa Clara County Stanford mitigation fund
- 2013: East Palo Alto finalized the Four Corners Transit-Oriented Development Specific Plan that includes the Ravenswood Bay Trail Connection



- 2014: Facebook agreed to construct a connecting Bay Trail segment along University Avenue between the Ravenswood Bay Trail Connection and Bayshore Highway. It was completed last year.

San Mateo County Measure A Funds

ABAG submitted a funding request on behalf of the partners and \$1 million is in the process of being awarded to the project by San Mateo County!

- The application included letters of support from East Palo Alto, Menlo Park, Midpeninsula Regional Open Space District and Facebook
- The funds will be applied to construction costs and an MOU will be signed by the three agencies. Additional needs will be covered by the Midpeninsula Regional Open Space District's Measure AA funds and/or Santa Clara County funds.
- San Mateo County Parks has incorporated this project into their Measure A budget and it is on track for formal approval by the San Mateo County Board of Supervisors in September.





Thank you to our public and private partners for their commitment to completing a critical gap in the Bay Trail system!