



# MIDPENINSULA REGIONAL OPEN SPACE DISTRICT

Preserve Name by Photographer Name/Source

## District Introduction and Update

Joshua Hugg  
Governmental Affairs Specialist

January 28, 2021



# Midpen Mission(s)



*“To acquire a regional greenbelt of open space land in perpetuity, protect and restore the natural environment, and provide opportunities for ecologically sensitive public enjoyment and education.”*

## **San Mateo County Coastside Mission (2004):**

*“To acquire and preserve in perpetuity open space land and agricultural land of regional significance, protect and restore the natural environment, preserve rural character, encourage viable agricultural use of land resources, and provide opportunities for ecologically sensitive public enjoyment and education.”*



MIDPENINSULA  
REGIONAL  
OPEN  
SPACE

# Rancho San Antonio Open Space Preserve





# About Midpen

- Public agency, created in 1972 by a grassroots voter initiative
- 770,000 constituents (2018)
- Elected board: seven directors
- Funded primarily through property tax
- 26 Preserves in Santa Clara, San Mateo and Santa Cruz counties
- 65,000 acres, 240+ miles of trails
- Preserves are free and open to the public
- Main office in Los Altos + field offices
- 180 employees, 600 volunteers
- \$300 million voter-approved General Obligation Bond passed in 2014 to support public priorities





# Monte Bello Open Space Preserve





# Midpen Jurisdiction and Open Space Preserves



#	Preserves
1	Bear Creek Redwoods Opening in 2019
2	Coal Creek
3	El Corte de Madera Creek
4	El Sereno
5	Foothills
6	Fremont Older
7	La Honda Creek
8	Long Ridge
9	Los Trancos
10	Miramontes Ridge
11	Monte Bello
12	Picchetti Ranch
13	Pulgas Ridge
14	Purissima Creek Redwoods
15	Rancho San Antonio
16	Ravenswood
17	Russian Ridge
18	Saratoga Gap
19	Sierra Azul
20	Skyline Ridge
21	St. Joseph's Hill
22	Stevens Creek Shoreline Nature Study Area
23	Teague Hill
24	Thornewood
25	Tunitas Creek
26	Windy Hill



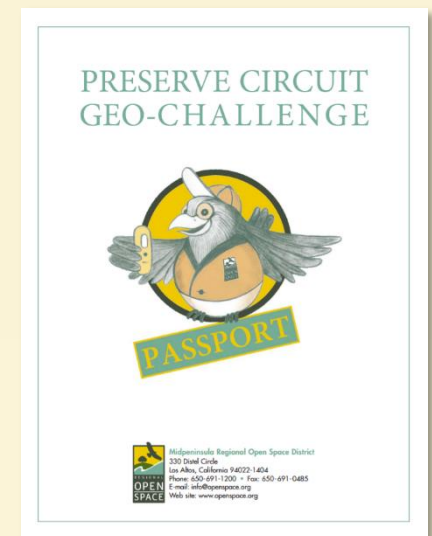
# Long Ridge Open Space Preserve





# Free Open Space Activities

- 240 miles of open space **hiking** trails
- 16 preserves with **mountain bike** trails
- 11 preserves are **dog-friendly** (1 off-leash area)
- Black Mountain **Backpack Camp**
- Dozens of free **docent-led hikes**
- **Geocaching** challenge
- **Volunteer** opportunities
- **Equestrian** trails







# Mount Umunhum





# Guided Activities

- ‡ 100+ free docent-led hikes offered: all-seasons, weekends + weekdays
- ‡ All ages and abilities welcome
- ‡ [www.openspace.org/what-to-do/calendar](http://www.openspace.org/what-to-do/calendar)





# Russian Ridge Open Space Preserve



# Volunteer Programs



- ✦ Preserve Partner
- ✦ Trail Patrol Volunteer
- ✦ Nature Center Host
- ✦ Outdoor Activity Docent
- ✦ Outdoor Education Leader





# Picchetti Ranch Open Space Preserve



# Outdoor Education Areas

## ‡ Daniels Nature Center

- Skyline Ridge Preserve
- Learn about pond habitats
- Explore Alpine Pond
- Open on weekends, spring-fall



## ‡ Deer Hollow Farm

- Rancho San Antonio Preserve
- Working historic farm
- Goats, chickens, pigs & more



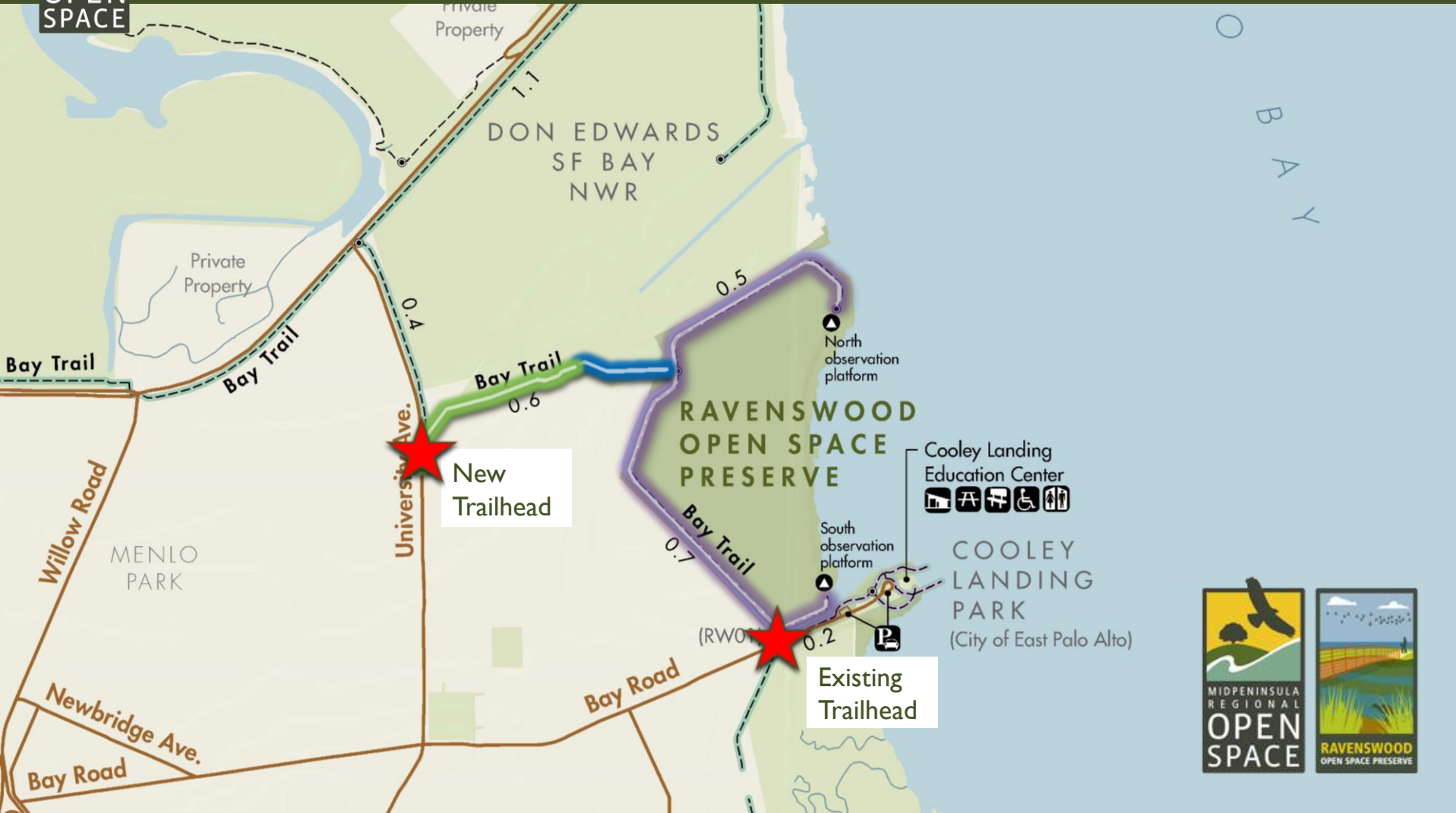


# What's New(t)? – Project Updates





# Ravenswood Bay Trail

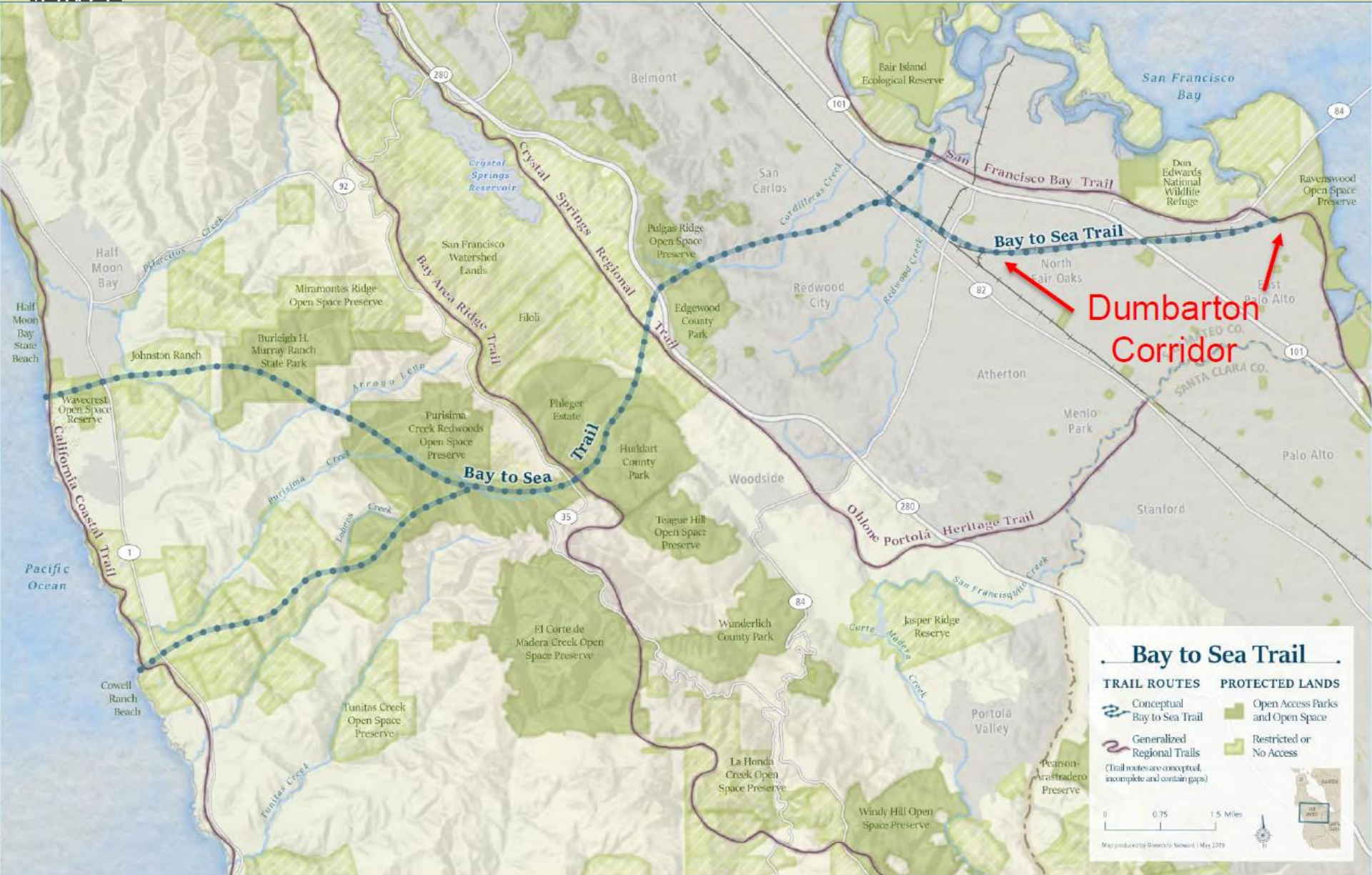




# Ravenswood Bay Trail Segment Completion



# Regional Trails

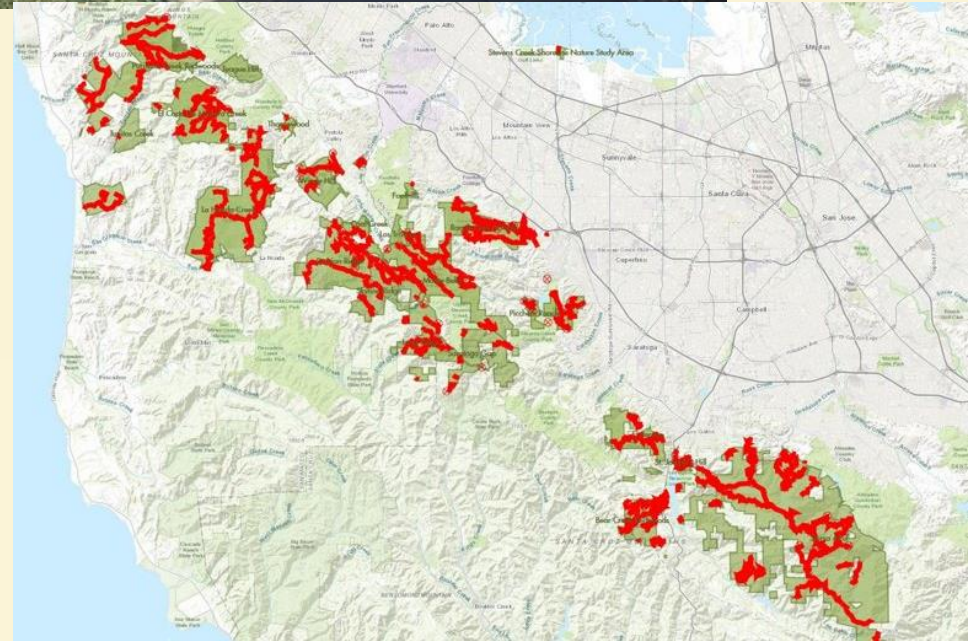


# Wildland Fire Resiliency Program



# Current Practices – Vegetation Clearing Along Roads

- ~235 miles of road
- 114 miles of narrow trail
- Emergency access for fire suppression
- Evacuation routes



# Current Practices – Fuel Breaks

- ✿ Shaded Fuel Breaks
- ✿ 12 miles of mowed lines
- ✿ >26 miles of disc line
- ✿ Temporary Refuge Areas
- ✿ Emergency staging areas
- Helicopter landing zones



# Current Practices – Conservation Grazing

Fuel Reduction of >8,000 acres of grassland through active grazing

- Reduces fire fuel loads
- Controls invasive species and preserves biodiversity





# Questions?



[www.openspace.org](http://www.openspace.org)

[info@openspace.org](mailto:info@openspace.org)

# Maximum Yearly Acreage

Current (ac./year)	
New*	0
Maintenance	365
Total	365
* No major fuelbreak can be created	



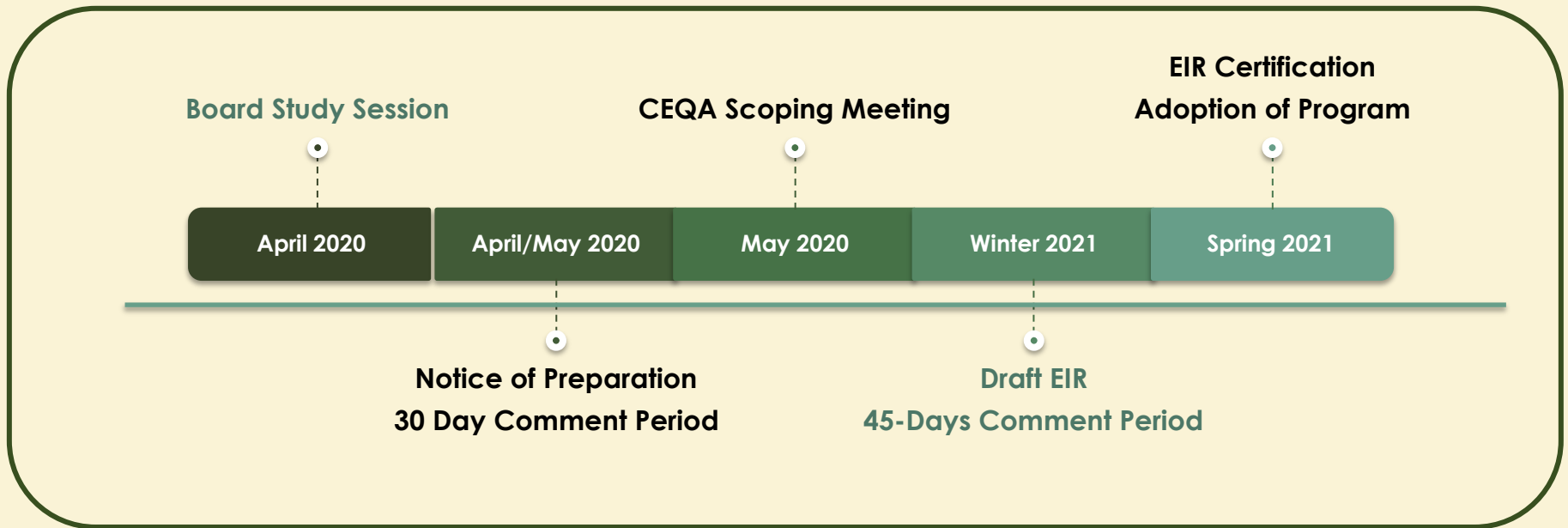
Fire Resiliency Plan			
	Fire Management (ac./year)	Ecosystem Resiliency (ac./year)	Total (ac./year)
New	730	500	1,230
Maintenance	900	500	1,400
Total	1,630	1,000	2,630

> 600%<sub>2</sub> increase





# Timeline / Public Comment Opportunities



***2021-22 (Tentative) – Public input and EIR for prescribed fire.***