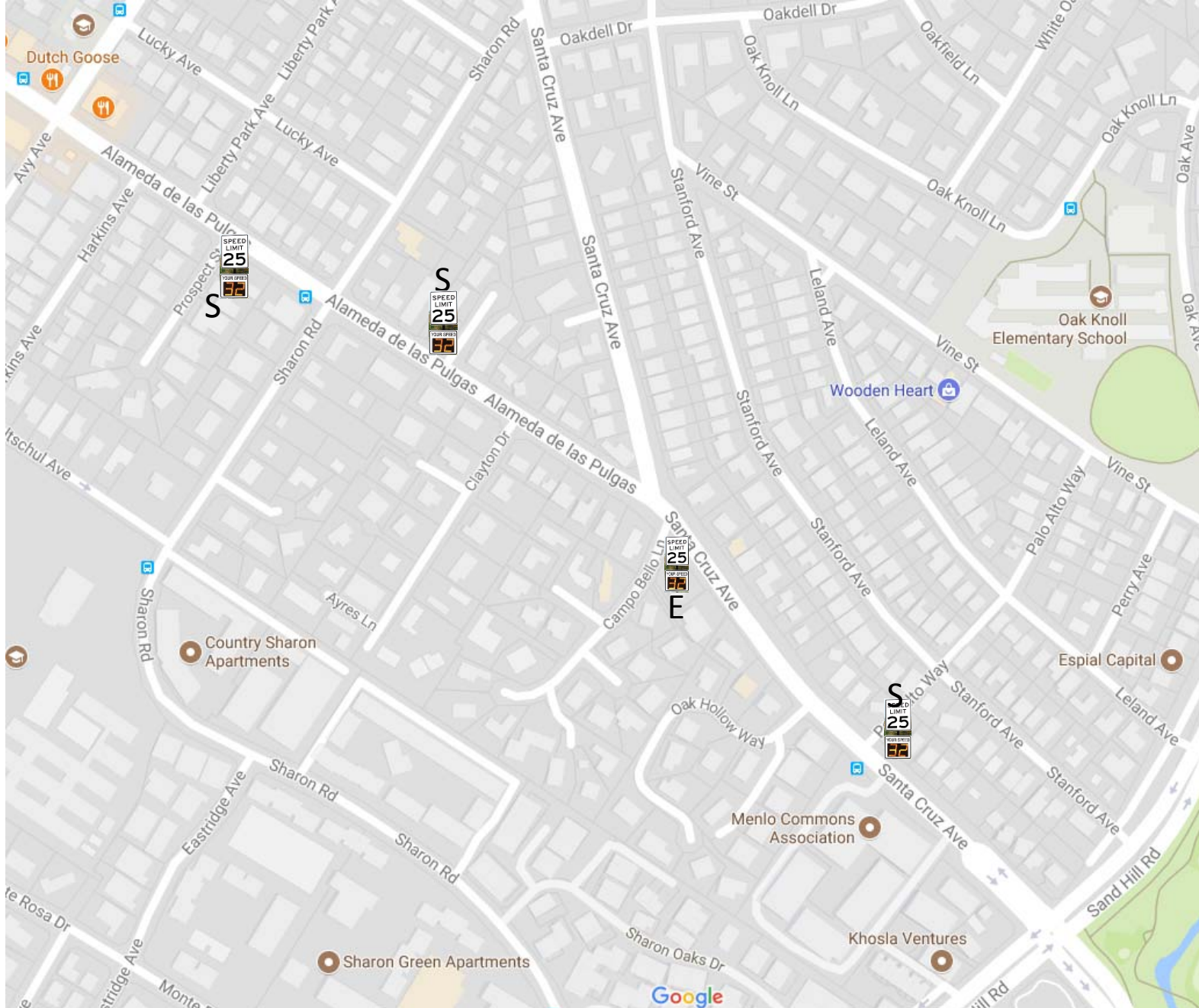


Santa Cruz /Alameda De Las Pulgas Corridor

Task Force Meeting

May 29, 2018

Proposed locations of the radar feedback signs



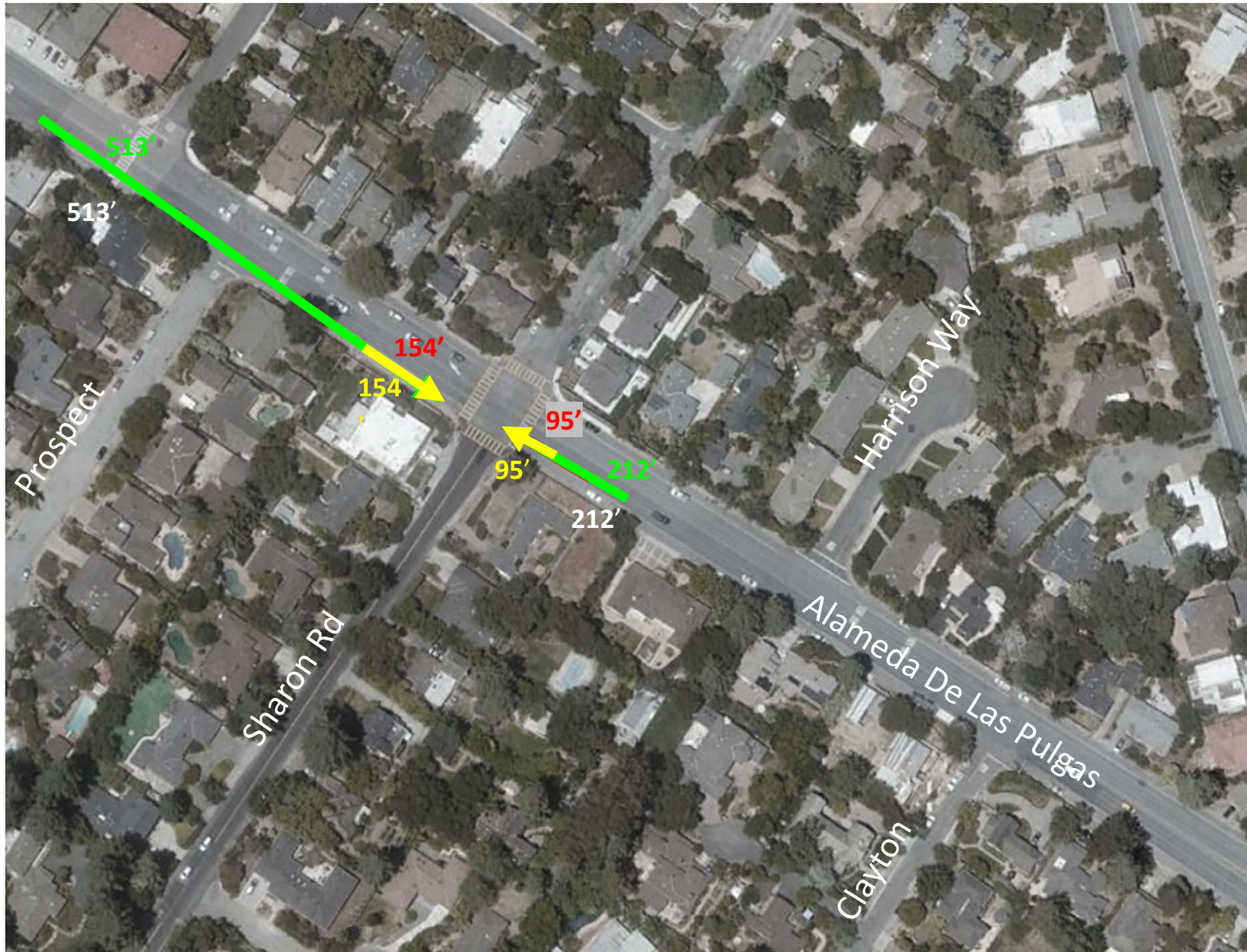
Santa Cruz Avenue

Critical 95th Percentile Queue Lengths – Existing Volumes

Scenarios Analyzed	Turning Movement	Campo Bello Ln/Alameda de las Pulgas/Santa Cruz Ave			Sand Hill Rd/Santa Cruz Ave			Alameda de las Pulgas/Sharon Rd		
		Storage	AM	PM	Storage	AM	PM	Storage	AM	PM
Existing	EBT	-	227	107						
	WBL	105	12	7						
	WBT	-	123	185						
	WBR	105	17	29						
	NBL									
	NBT	-	30	23				-	95	151
	SBL	-	155	244	120	190	75			
	SBT	-	158	241	-	436	315	-	154	91
Existing Plus Signal Modification at the Y	EBT	-	227	107						
	WBL	105	12	7						
	WBT	-	123	185						
	WBR	105	532	624						
	NBL									
	NBT	-	30	23				-	95	151
	SBL	-	155	244	120	190	75			
	SBT	-	158	241	-	436	315	-	154	91
Existing Plus 2NB/1SB Road Diet	EBT	-	680	255						
	WBL	105	13	7						
	WBT	-	282	566						
	WBR	-	17	29						
	NBL									
	NBT	-	30	23				-	212	700
	SBL	-	160	257	120	190	75			
	SBT	-	157	248	-	436	315	-	513	356
Existing Plus 2NB/1SB Road Diet Plus Signal Modification at the Y	EBT	-	680	255						
	WBL	105	12	7						
	WBT	-	282	566						
	WBR	-	532	624						
	NBL									
	NBT	-	30	23				-	212	700
	SBL	-	160	257	120	190	75			
	SBT	-	157	248	-	436	315	-	513	356
SBR	29	0	0	180	150	63				

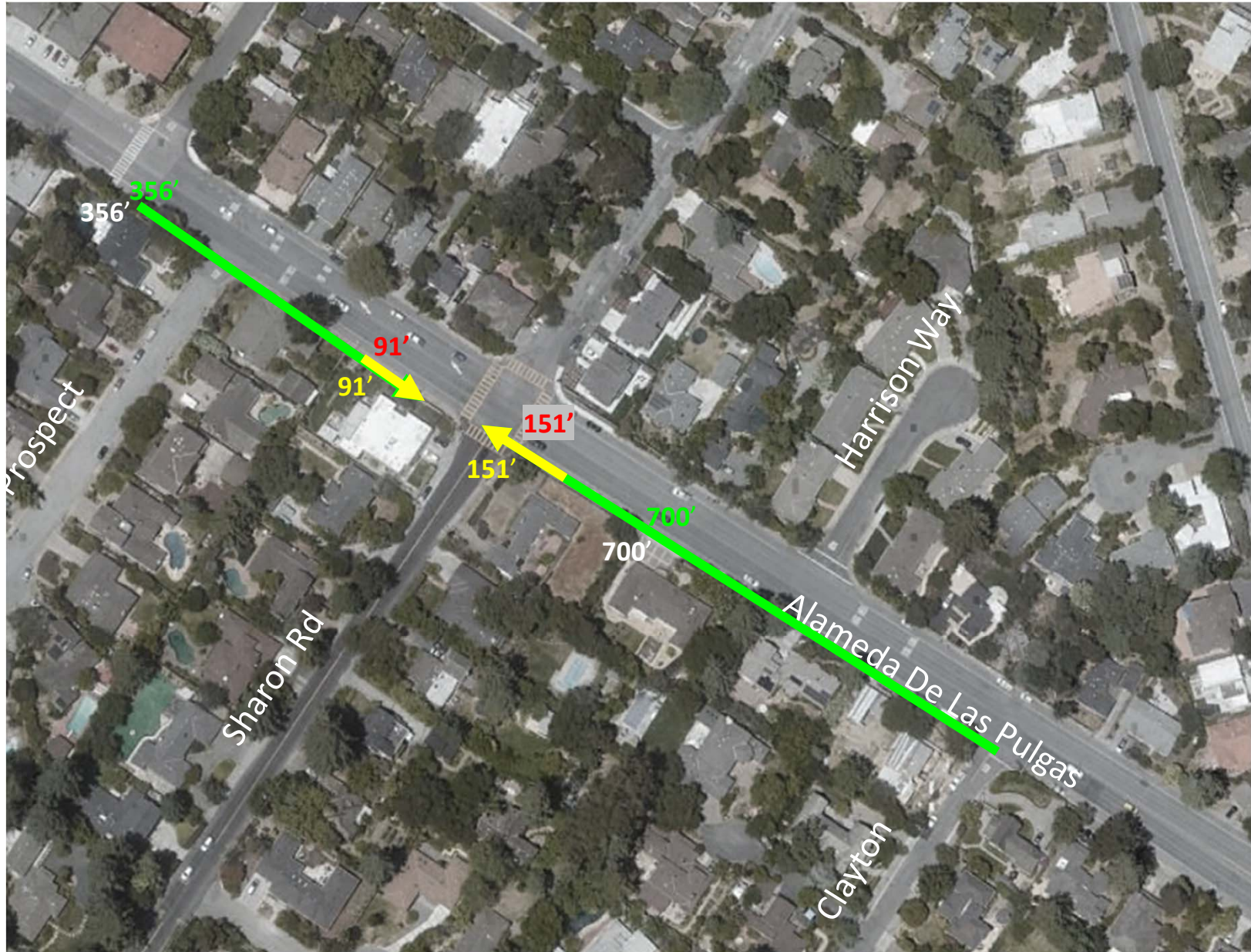
Sharon RD and ADLP- AM Peak Hour-Critical 95th percentile queue lengths

Existing █ Existing+ Y Signal Modification █ Existing+Diet █ Existing+Diet+ Y Modification



Sharon RD and ADLP- PM Peak Hour-Critical 95th percentile queue lengths

Existing █ Existing+Y Signal Modification █ Existing+Diet █ Existing+Diet+ Y Modification



The Y - AM Peak Hour-Critical 95th percentile queue lengths

Existing █ Existing+ Y Signal Modification █ Existing+Diet █ Existing+Diet+ Y Modification



The Y - PM Peak Hour-Critical 95th percentile queue lengths

Existing █ Existing+ Y Signal Modification █ Existing+Diet █ Existing+Diet+ Y Modification



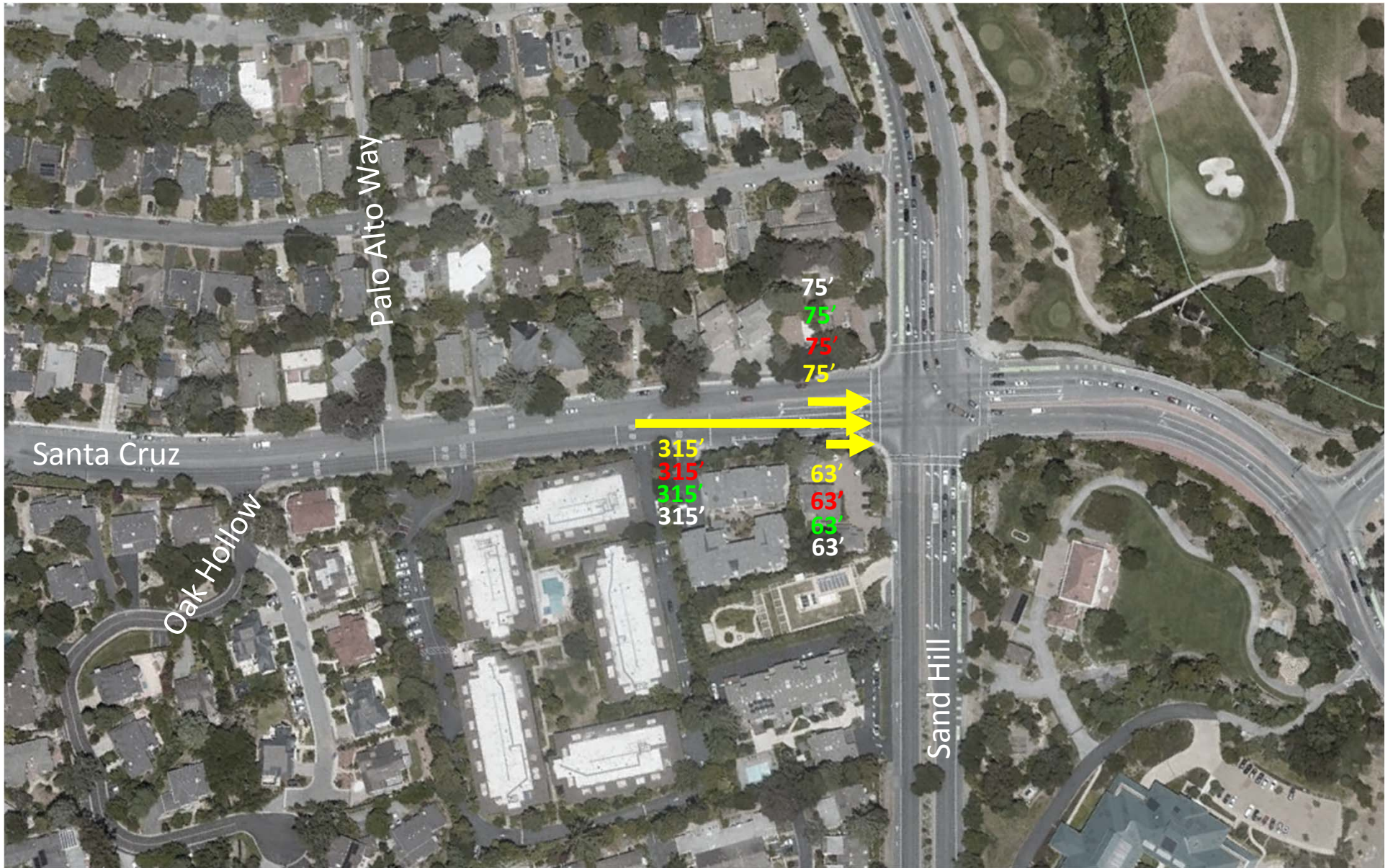
Sand Hill RD and ADLP- AM Peak Hour-Critical 95th percentile queue lengths

Existing █ Existing+ Y Signal Modification █ Existing+Diet █ Existing+Diet+ Y Modification



Sand Hill RD and ADLP- PM Peak Hour-Critical 95th percentile queue lengths

Existing █ Existing+ Y Signal Modification █ Existing+Diet █ Existing+Diet+ Y Modification



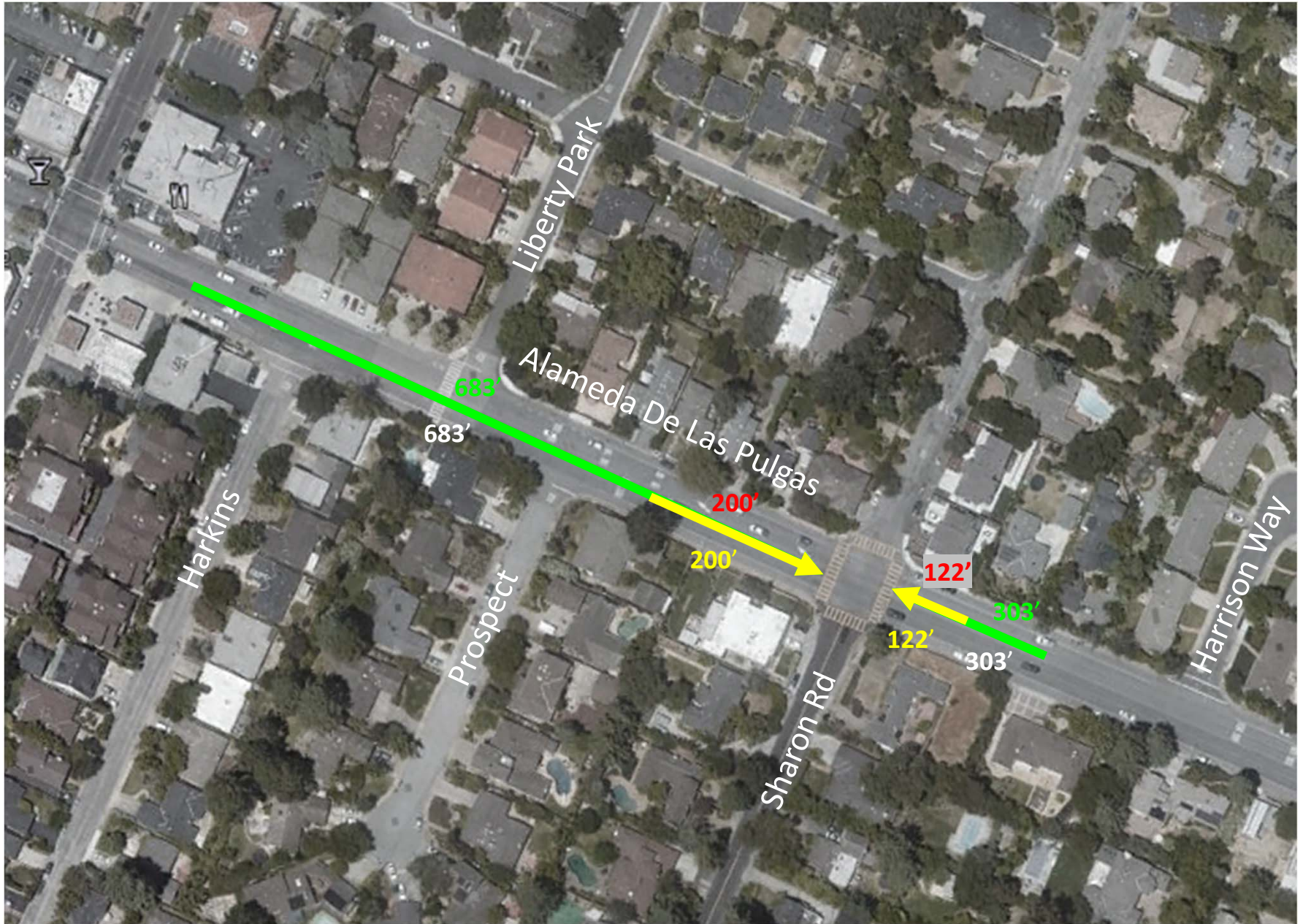
Santa Cruz Avenue

Critical 95th Percentile Queue Lengths – Horizon Year 2040

	Turning Movement	Campo Bello Ln/Alameda de las Pulgas/Santa Cruz Ave			Sand Hill Rd/Santa Cruz Ave			Alameda de las Pulgas/Sharon Rd		
		Storage	AM	PM	Storage	AM	PM	Storage	AM	PM
Horizon Year	EBT	-	272	165						
	WBL	105	7	7						
	WBT	-	169	237						
	WBR	105	17	31						
	NBL									
	NBT	-	28	20				-	122	195
	SBL	-	167	369	120	221	99			
	SBT	-	171	377	-	512	513	-	200	377
	SBR	29	0	0	180	190	129			
Horizon Year Plus Signal Modification at the Y	EBT	-	260	165						
	WBL	105	7	7						
	WBT	-	162	237						
	WBR	105	573	795						
	NBL									
	NBT	-	28	20				-	122	195
	SBL	-	175	269	120	221	99			
	SBT	-	178	377	-	512	513	-	200	377
	SBR	29	0	0	180	190	129			
Horizon Year Plus 2NB/1SB Road Diet	EBT	-	815	445						
	WBL	105	8	8						
	WBT	-	449	776						
	WBR	-	17	31						
	NBL									
	NBT	-	28	20				-	303	568
	SBL	-	176	386	120	221	99			
	SBT	-	173	383	-	512	513	-	683	420
	SBR	29	0	0	180	190	129			
Horizon Year Plus 2NB/1SB Road Diet Plus Signal Modification at the Y	EBT	-	816	445						
	WBL	105	8	8						
	WBT	-	450	776						
	WBR	-	593	795						
	NBL									
	NBT	-	28	20				-	303	568
	SBL	-	184	386	120	221	99			
	SBT	-	184	383	-	512	513	-	683	420
	SBR	29	0	0	180	190	129			

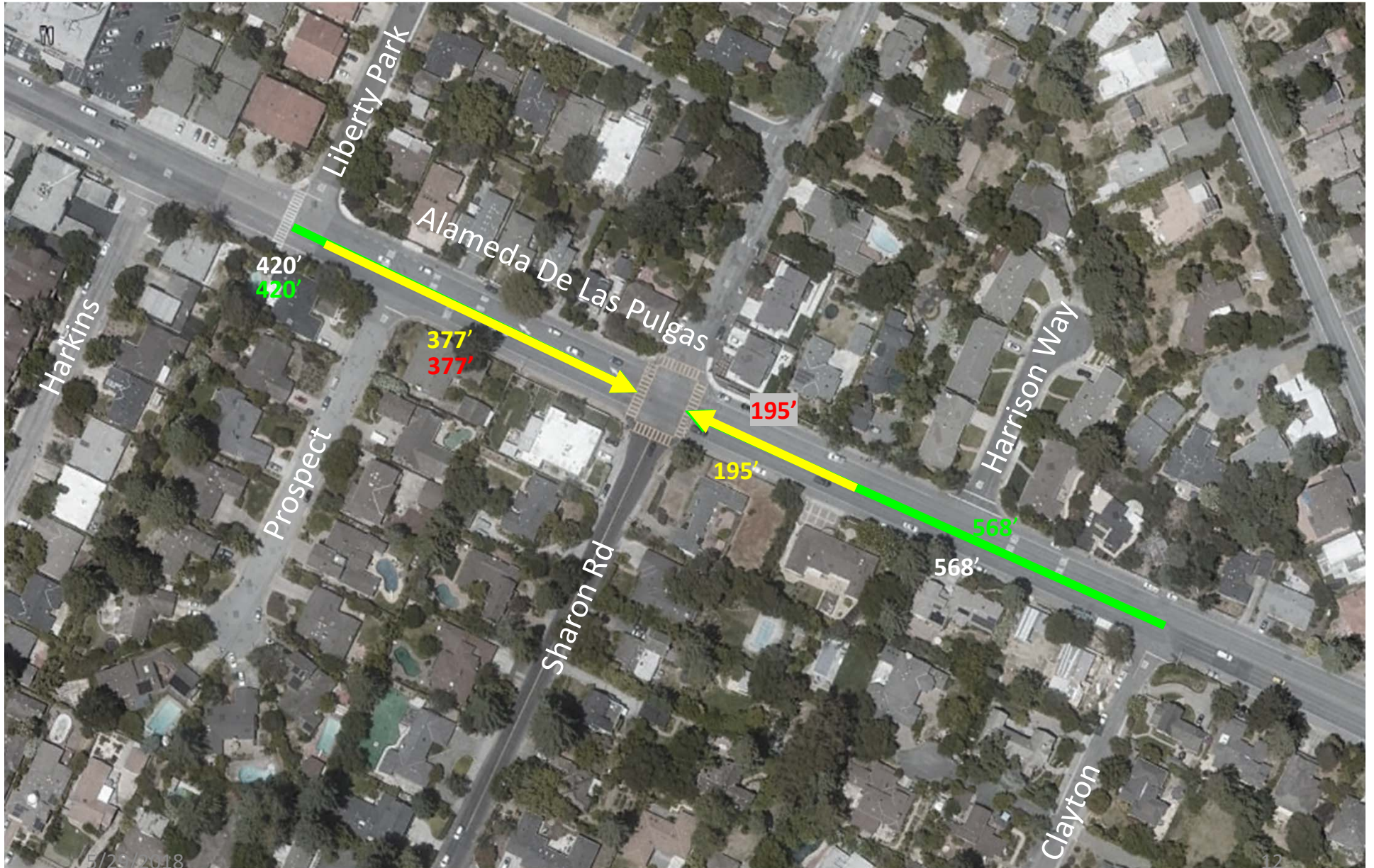
Sharon RD and ADLP- AM Peak Hour-Critical 95th percentile queue lengths- Horizon Year 2040

Horizon █ Horizon+Y Signal Modification █ Horizon+Diet █ Horizon+Diet+ Y Modification



Sharon RD and ADLP- PM Peak Hour-Critical 95th percentile queue lengths Horizon Year 2040

Horizon █ Horizon+Y Signal Modification █ Horizon+Diet █ Horizon+Diet+ Y Modification



The Y - AM Peak Hour-Critical 95th percentile queue lengths-Horizon Year 2040

Horizon █ Horizon+ Y Signal Modification █ Horizon+Diet █ Horizon+Diet+ Y Modification



The Y - PM Peak Hour-Critical 95th percentile queue lengths - Horizon Year 2040

Horizon █ Horizon+ Y Signal Modification █ Horizon+Diet █ Horizon+Diet+ Y Modification



Sand Hill RD and ADLP- PM Peak Hour-Critical 95th percentile queue lengths - Horizon Year 2040

Horizon █ Horizon+ Y Signal Modification █ Horizon+Diet █ Horizon+Diet+ Y Modification



Sand Hill RD and ADLP- AM Peak Hour-Critical 95th percentile queue lengths - Horizon Year 2040

Horizon █ Horizon+ Y Signal Modification █ Horizon+Diet █ Horizon+Diet+ Y Modification

